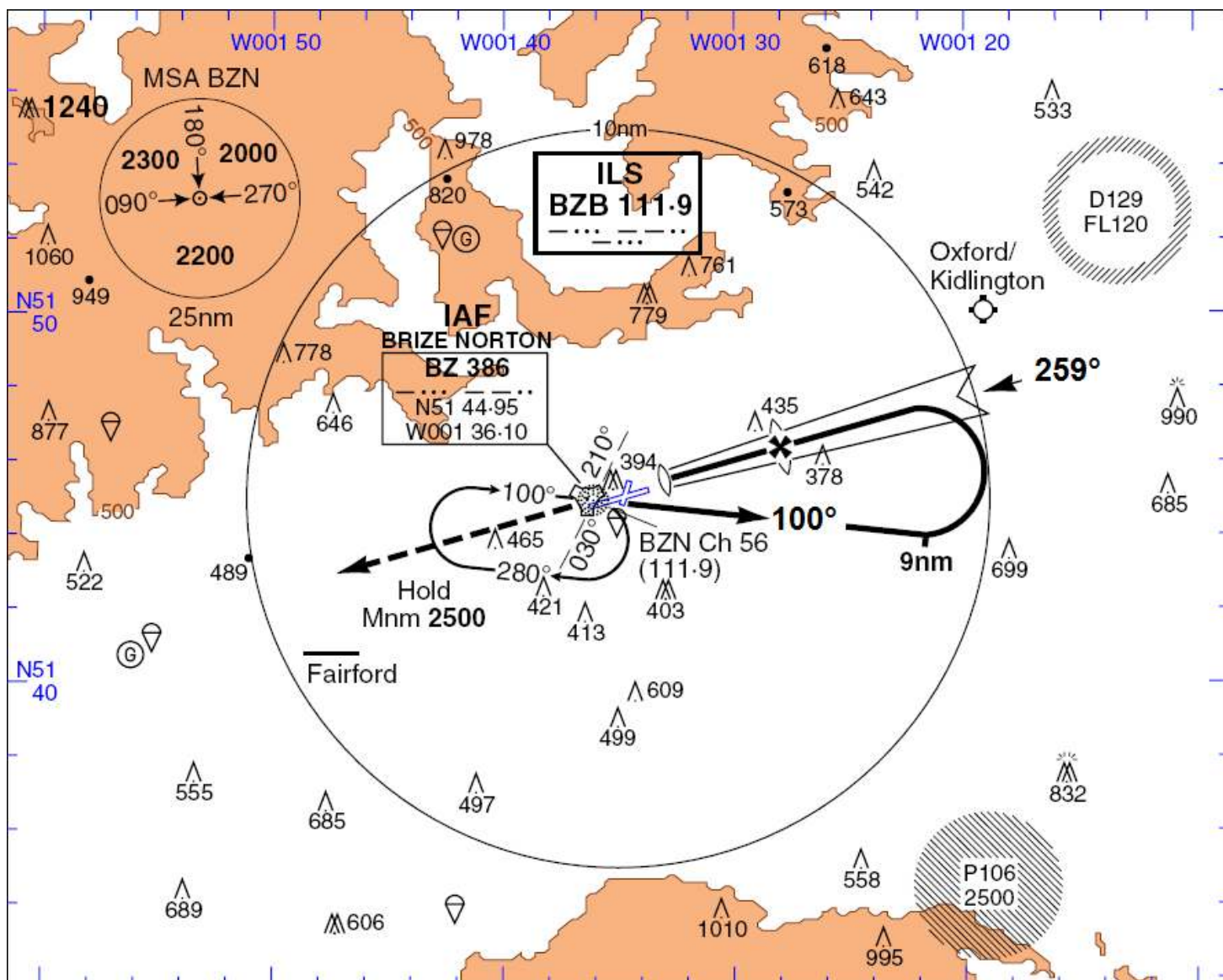


BRIZE NORTON ILS 26



NAV1 settings: 111.90 – course 259
NAV2 settings: 113.40 – DME FFA (Fairford)
NDB settings: 386
Altimeter settings: 2500 feet
KIAS settings: 200 kts

Start landing procedure

Approach Brize Norton and centerline on runway 26, altitude 2500 ft, reduce airspeed to 200 knots.

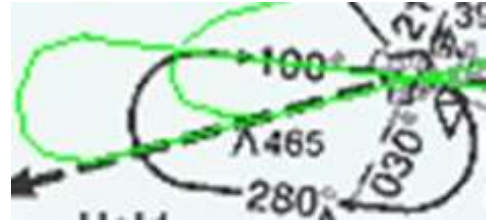
Execute procedures

Overhead Brize Norton and clear of runway maintain runway heading



5 miles out

make a right turn to a heading of 100°



once level, your ADF should be inbound on NDB BZ at 4.5 NM



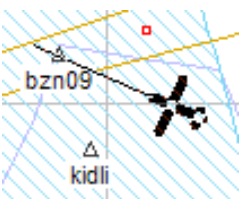
overhead Brize Norton terminal continue on a heading of 100°



6 miles outbound, reduce your airspeed to 160 knots



9 miles outbound, make a left turn to 300°



once level on 300° you should be heading to ISEC BZN09

Now watch your Horizontal Situation Indicator and try to catch the ILS
You are now 9 NM out of the runway



When locked on ILS continue your approach.

Reduce your airspeed to 150 kts.

Do not forget to lower the gear.

Adjust flaps and trim settings
Arm spoilers en set autobrakes

View from the virtual cockpit





Over the threshold cut the engines and flare.

This should be like they do it in realworld RAF