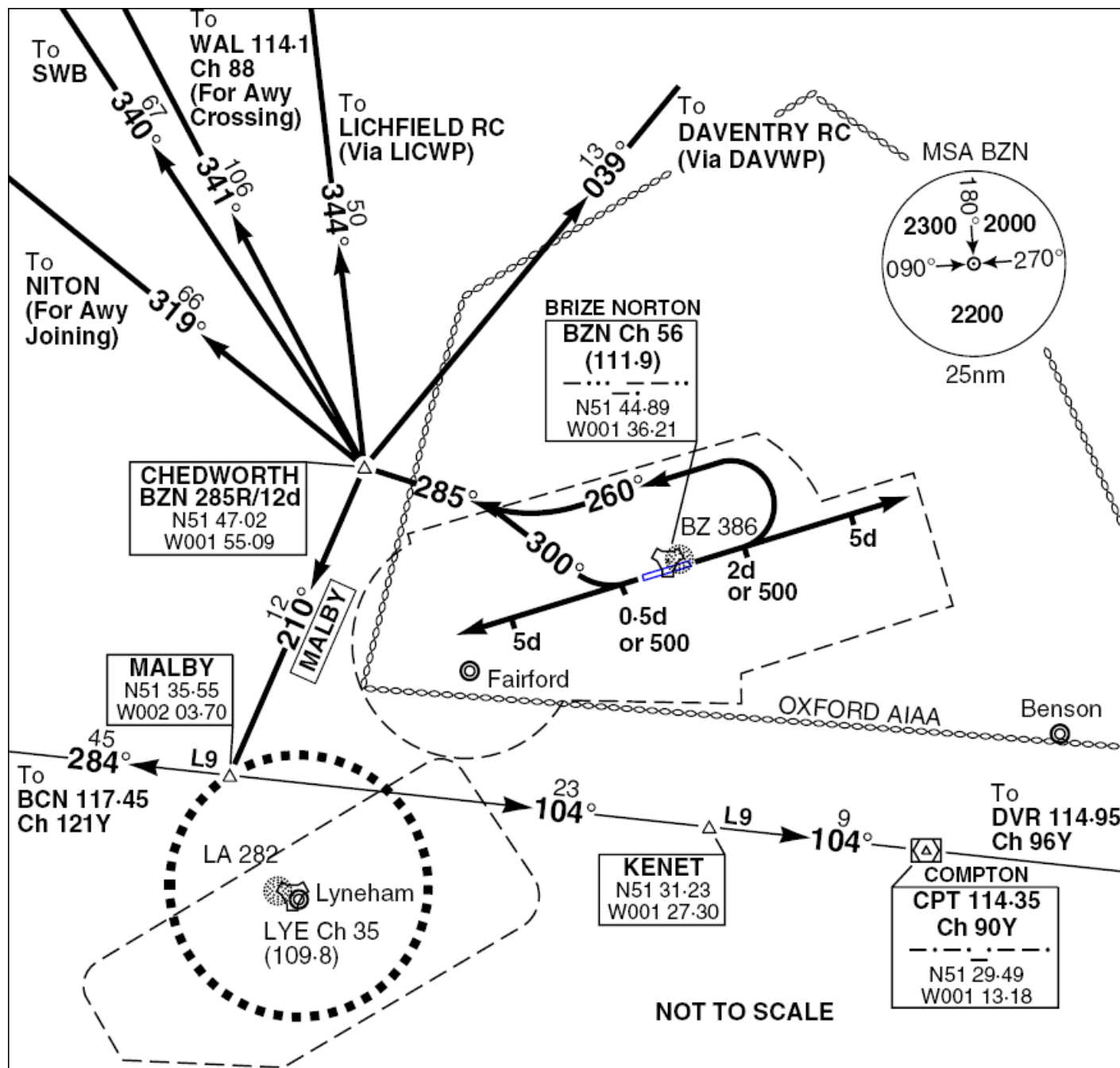


# BRIZE NORTON DEPARTURE



**Departure rwy 26**, climb rwy heading, once 3nm out make a right turn to 300°, when 9nm out turn left to 285°, you will reach ISEC CHEDH when 12nm outbound BZN, a bit to the left you will see Rendcombe (=reference).

**Departure rwy 08**, climb rwy heading, once 3nm out make left turn to 260°, hold 14.5° flaps and 210 KIAS, when 6nm out turn right to 285°, you will ISEC CHEDH when 12nm outbound BZN, a bit to the left you will see Rendcombe (= reference).